

Help where are my implants?!

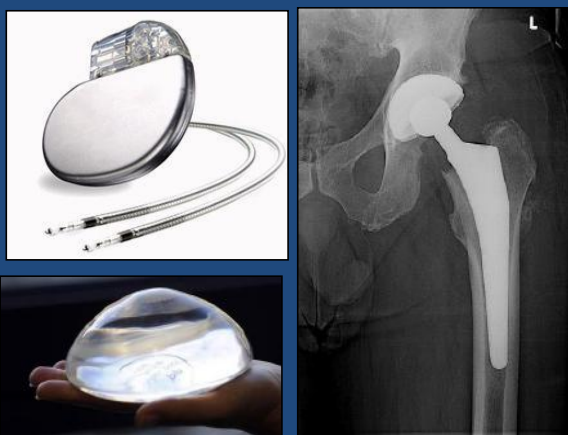
Implants registration is patient safety

Interested how we did this? Email me: Ch.Betzema@upcmail.nl



What are the problems:

1. We could not register the implants



2. We could not find the implants



3. Sometimes we did not know how to use the implants



4. We had challenges in ordering and storing the implants



Solutions/Results:

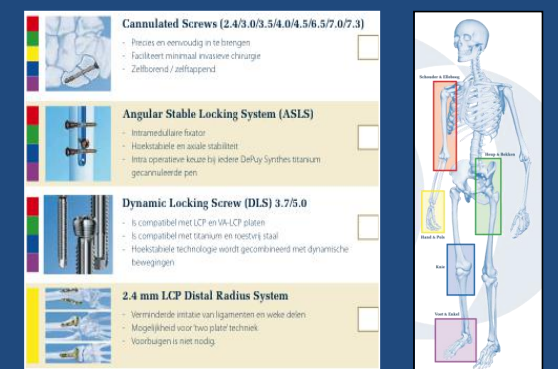
1. All implants are registered in EPIC

Product	Code	Material	Quantity	Unit Price	Total Price
2.4 mm LCP Distal Radius System	240000	2.4 mm LCP Distal Radius System	1000	1000.00	1000.00
Dynamic Locking Screw (DLS) 3.75.0	375000	Dynamic Locking Screw (DLS) 3.75.0	1000	1000.00	1000.00
Angular Stable Locking System (ASLS)	400000	Angular Stable Locking System (ASLS)	1000	1000.00	1000.00
Canulated Screws (L4/3,0/3.5/4.0/4.5/5.0/5.5/6.0/7.0)	500000	Canulated Screws (L4/3,0/3.5/4.0/4.5/5.0/5.5/6.0/7.0)	1000	1000.00	1000.00

2. Track and tracing system



3. Easy system to work with Color system



4. Correct storing and automatically ordering

